



Practicing knowledge | delivering impact





Sustainability is at our heart

Enzen was established with a singular purpose.

**To make energy and water affordable,
accessible and sustainable for all.**



Global Experience – Local Presence



Customers

Globally 255+
Across the group



Employees

Globally: 4200+



Locations

Offices in 8 Countries
Delivery to 26+ countries



Growth

Revenue CAGR of 67%
since inception





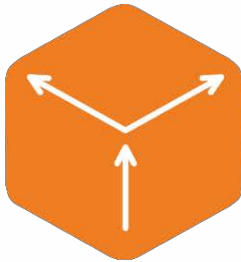
Partner

smarter grid solutions
Energy monitoring & control

Our Capability & Structure

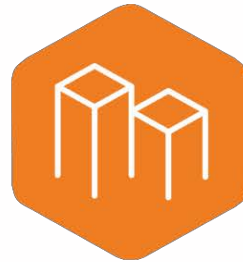


Business Units



BUSINESS TRANSFORMATION

We help energy and water businesses develop strategy and manage sustainable change to deliver transformative advantage



BUSINESS OPERATIONS

We connect performance and operations to enhance asset value and consistently deliver frontier levels of efficiency, customer experience and asset reliability



ENERGY AND WATER NETWORKS

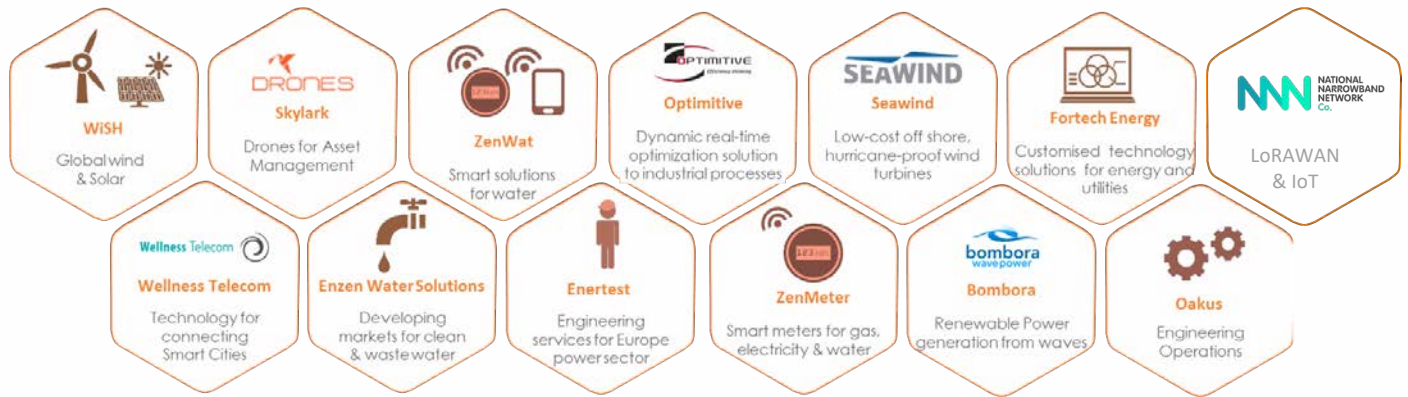
We help our customers move to Transactive Smart Networks of the future by identifying and delivering consumer centric, holistic asset network solutions



DIGITAL ENTERPRISE

We help energy and water businesses utilise digital technology by creating tools to measure, automate and optimise workflows,

Controlled Entities





Integrating Industrial IoT into your Business

THE ENZEN GROUP

JULY 2020

e – ian.mcleod@enzen.com

m – 0407 034 216





IoT: Why Now – A Tipping Point?

COVID and natural disasters are driving the need for:

- Agility and business continuity
- Remote access and control
- Asset, equipment and material tracking
- Supply chain visibility
- People proximity, tracking and health monitoring
- Government community infrastructure stimulus
- Business & community efficiency & innovation

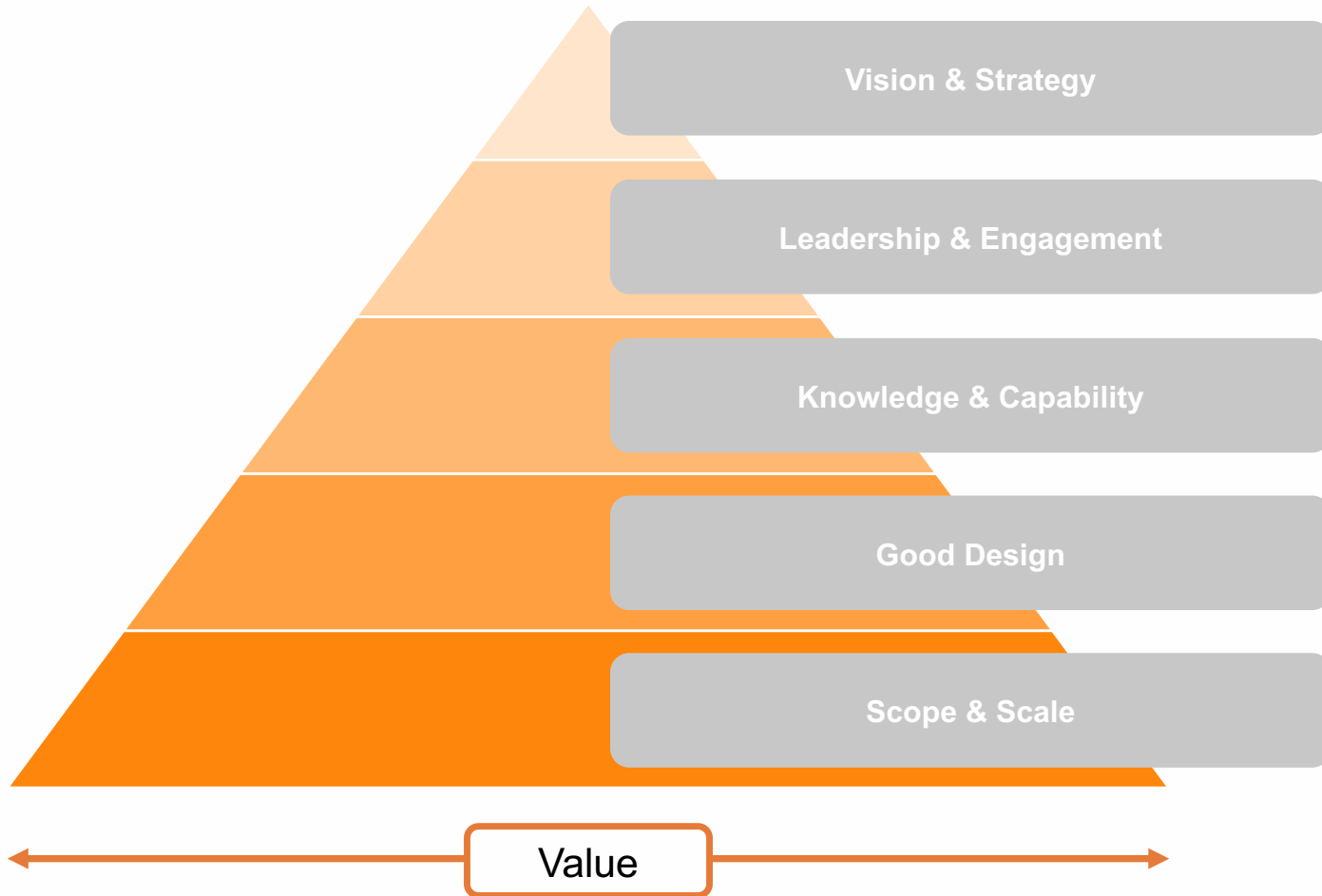
Scarcity, security & environmental impact on resources

- Drought – water scarcity & management
- Energy security – commodity vs services, passive vs active management, increased renewable hosting capacity





Success is a Product of:



One of the greatest projects of the Great Depression era, The Rockefeller Center & integrated media complex – Radio City

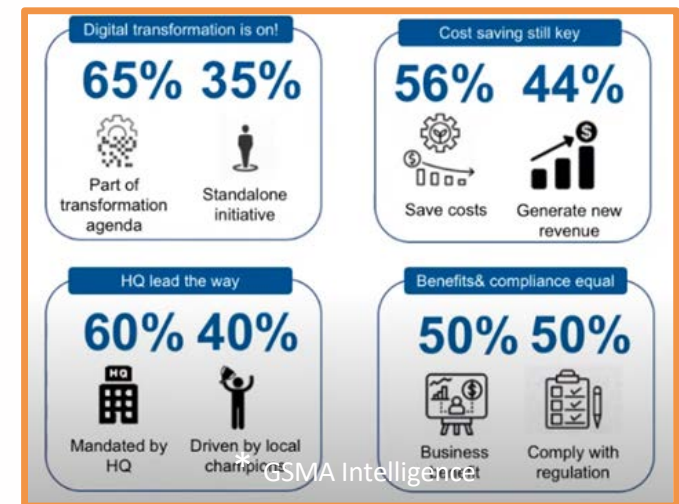




Success requires **Vision & Strategy**



- **Vision** – 1, 5 and 10-year horizons
- **Strategy**
 - An **Enterprise strategy** that includes environmental scans on customer expectations, markets, technology, policies and regulatory changes
 - A sub-ordinate **Digital Transformation Strategy** – how does IoT fit with the digital architecture
 - An **IoT Strategy and Roadmap**



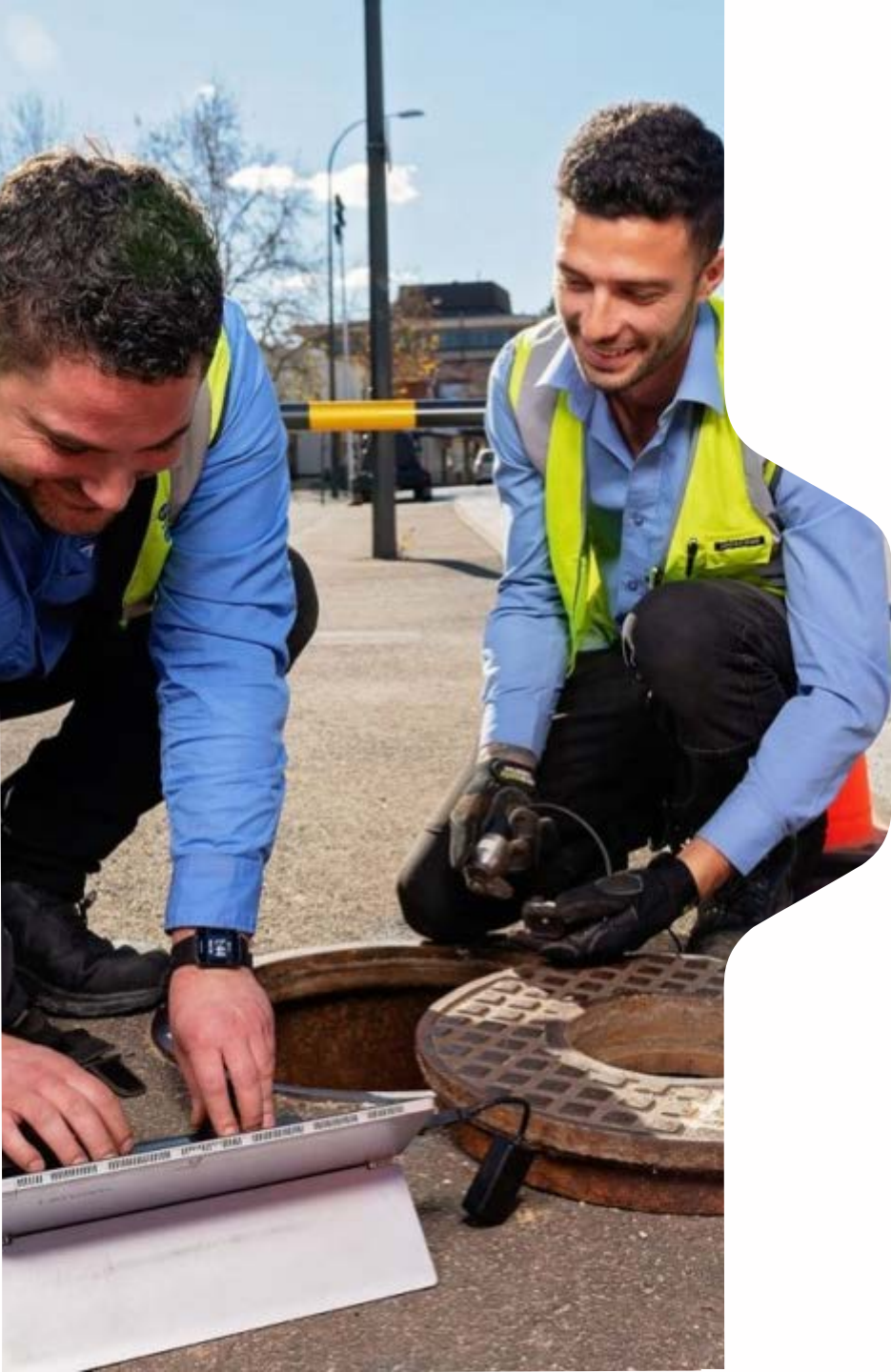


Success requires **Leadership & Engagement**

- Create **social & economic** value for the business and the community
- Ensure horizontal and vertical **ownership** within the business
- **Communicate, collaborate** and **engage** with employees and unions
- **Democratise** data and knowledge
- Use the agility of IoT as a **platform for Innovation**
- Understand the **real cost** i.e. SCADA vs IoT
- Implement **new operating models**
- Consider ownership of the IoT network as part of your **customer and community engagement** strategy

Agriculture Victoria On-farm IoT Trials





Success requires **Knowledge & Capability**



- Develop **Data Requirements** to feed the strategy
- **Learn** from others by leveraging existing research and development, trials and scale deployments
- Engage a system integration and business transformation **partner**
- Develop internal capability in IoT, data science and operations **expertise**

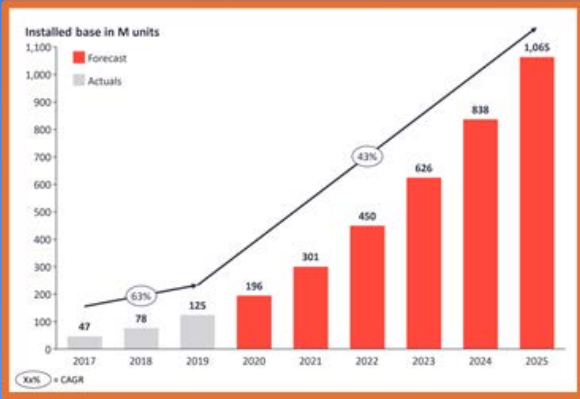


Success requires **Good Design**

- Use **Open Standards** to increase competition, agility and flex - avoid vendor lock in and leverage development communities
- Design network architecture – fit for purpose (see illustration) **Carrier Grade** networks with device management
- Ensure mature **Cyber Security** capabilities
- Establish an any network **IoT Enterprise Data Layer** to integrate IoT data with other enterprise systems
- Ensure **interoperability** and **multi tenant** capability
- Ensure **control** and **multicast capability**
- Choose a suitable **business model**
 - IoT as a service
 - Infrastructure partnership – data & revenue

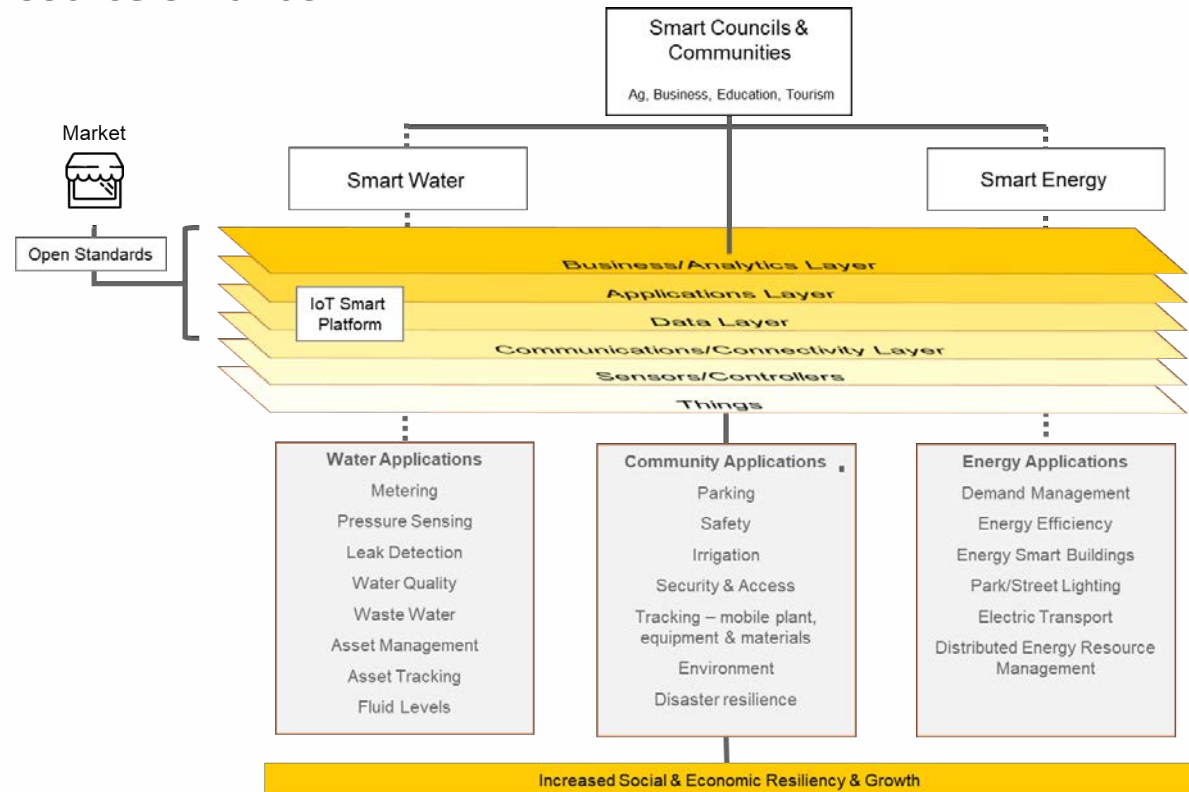


	Local Area Networks (Bluetooth, ZigBee, WiFi)	Cellular (3G, 4G/LTE, CDMA)	LPWAN Low Powered Wide Area Network
DATA RATE	~100kbps-100mbps	~100kbps-100mbps	~10kbps
RANGE	Short	Long	Long
BATTERY LIFE	Varies	Short	Long
COST	Expensive	Expensive	Efficient
EXAMPLE USE CASES	In-home/Building & Consumer Smart TV, A/V, WiFi Networks, Bluetooth	Traditional M2M Smart grid, CCTV, Asset tracking, Personal communication	55% of IoT Market Monitoring, Metering, Temp, Asset tracking, Weather, Location



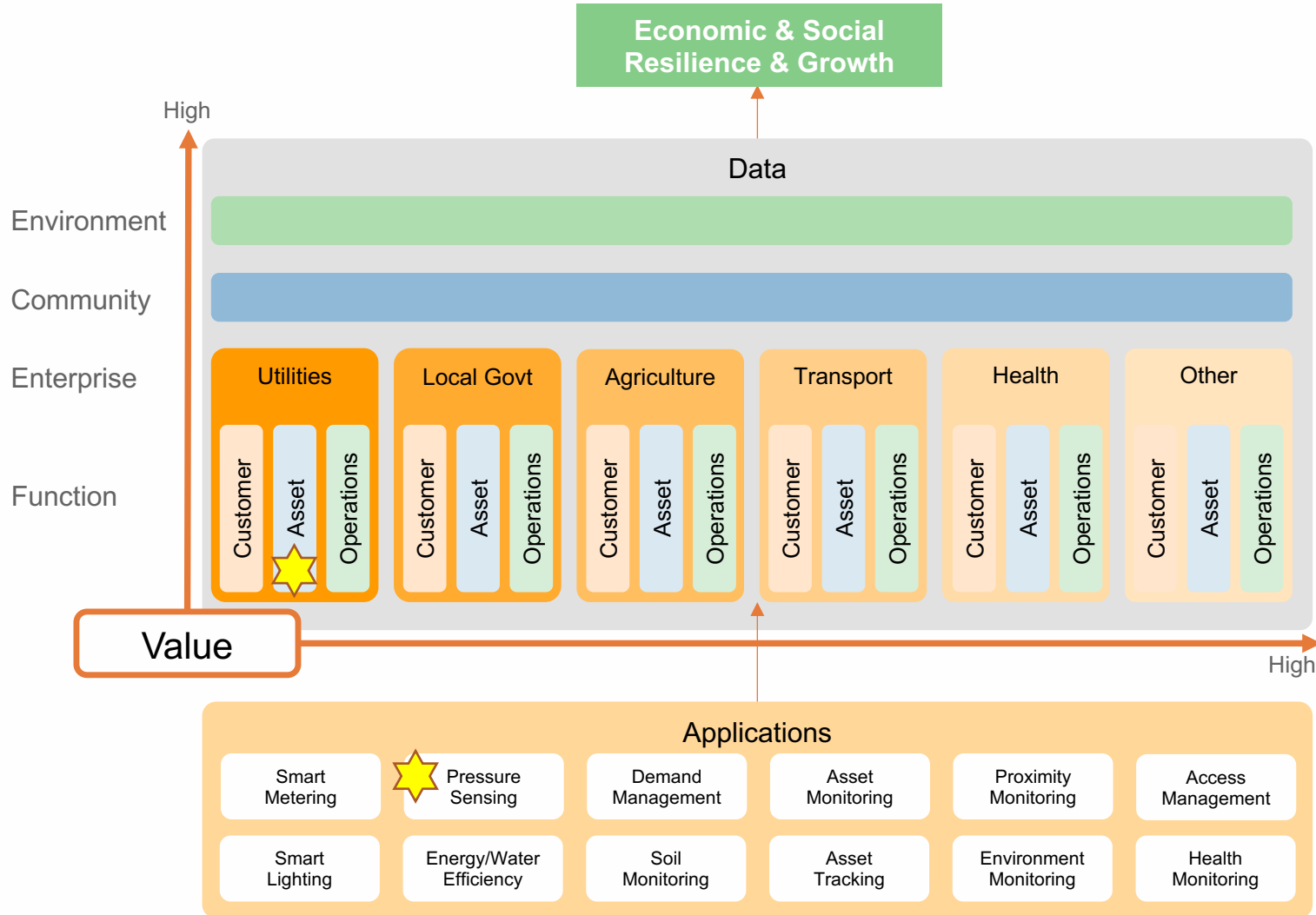
Success requires **Scope & Scale**

- Assess **all of business** internal applications and value – no silos, bolt-ons or exclusion of management services
- Consider IoT Platform services to **customers & third parties**
- Leverage the **energy & water nexus** to create a sustainable source of funds





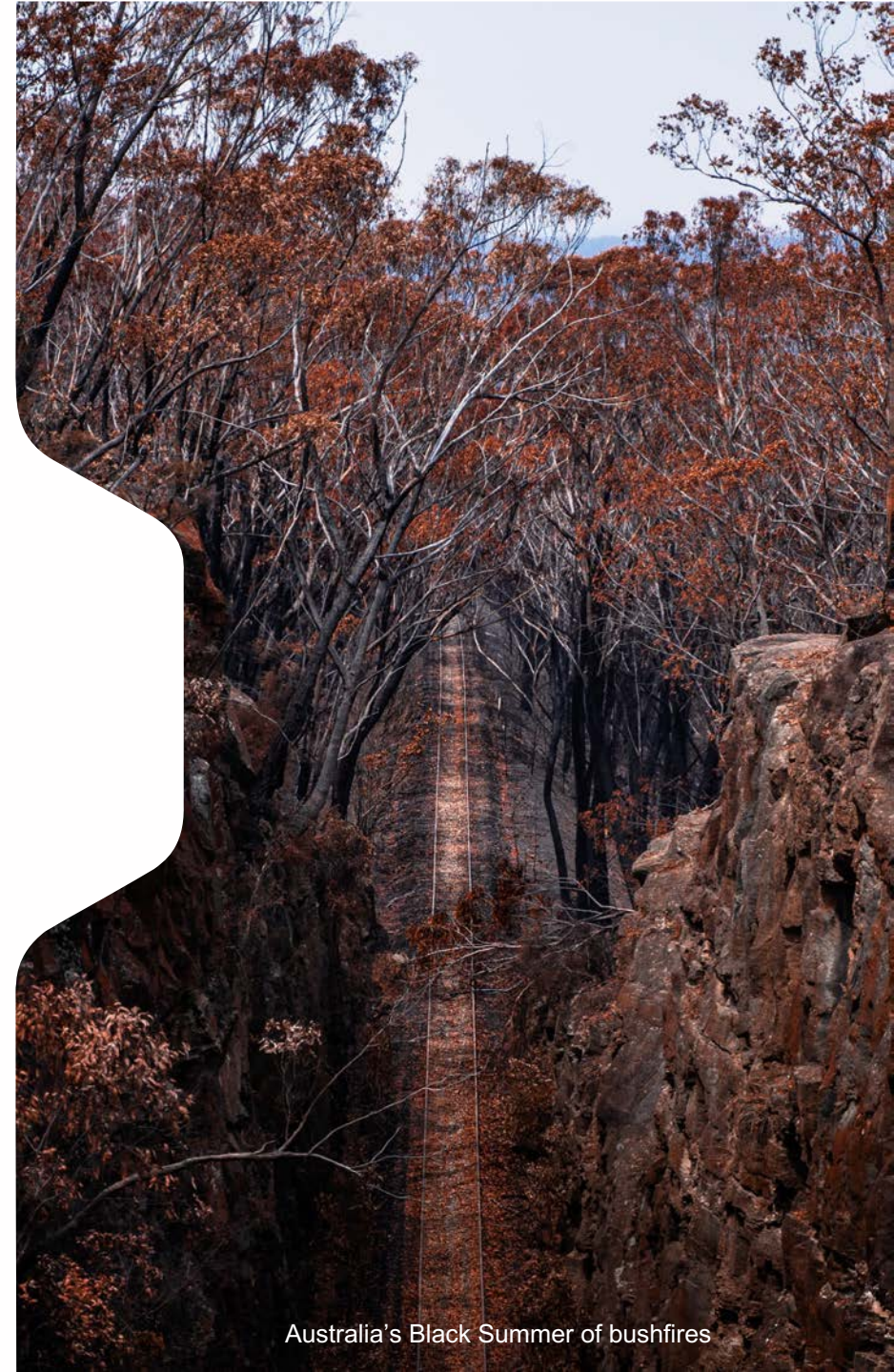
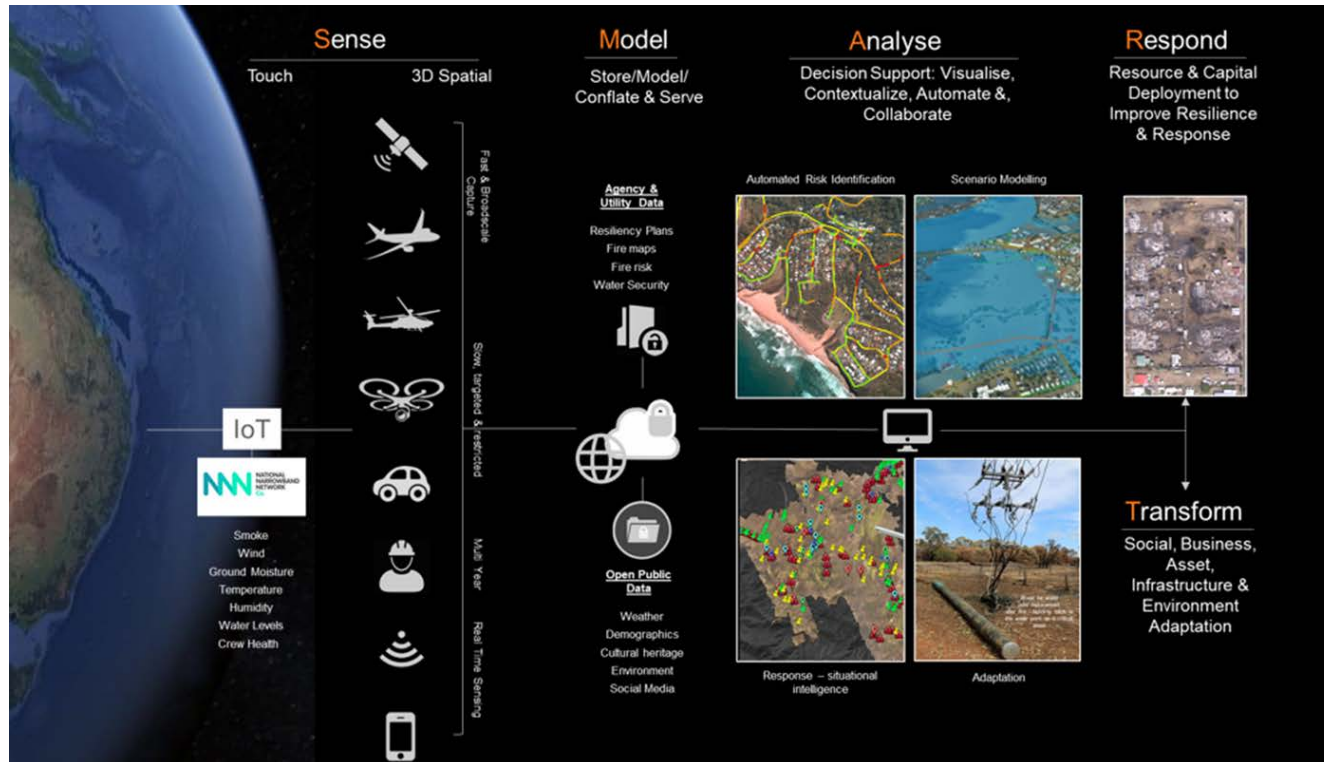
Amplifying Value





Example: Disaster **Smart** Solution

A sensed territory conflated with other enterprise and public data will increase social and economic resiliency



Australia's Black Summer of bushfires